

The logo for Adeex Corporation features the word "ADEEX" in a bold, white, sans-serif font. The letter "A" is stylized with a triangular shape on its left side. The letters "D", "E", and "E" are connected, with the second "E" having a horizontal bar that extends to the right. The letter "X" is also bold and sans-serif. A thin red horizontal line is positioned directly below the letters "ADEEX".

**ADEEX**

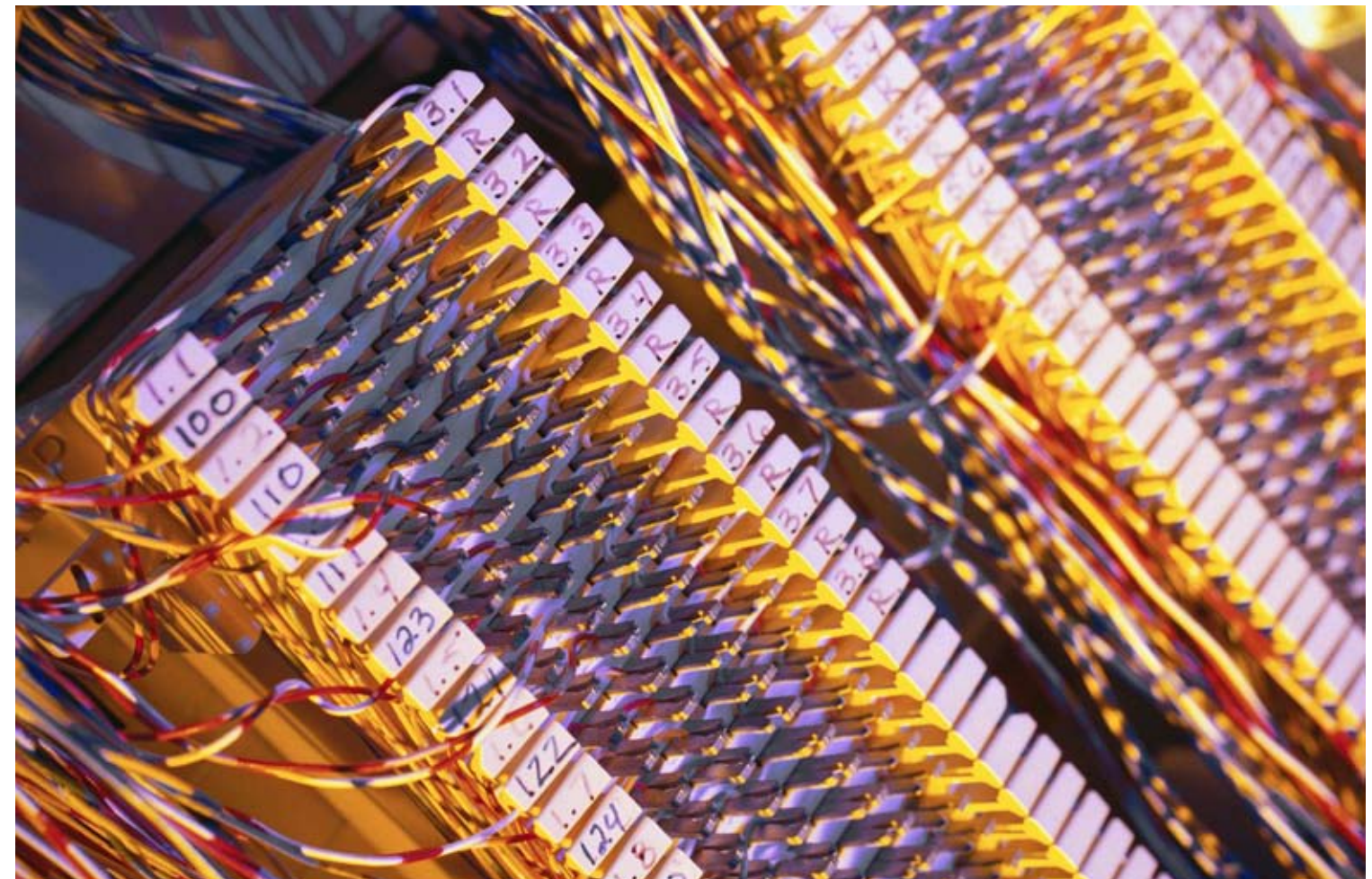
C O R P O R A T I O N

ADVANCING  
TECHNOLOGY  
THROUGH  
PEOPLE

ADEX Corporation is an international service organization that provides turnkey services and project staffing solutions exclusively to the telecommunications industry. ADEX assists telecommunications companies throughout the project life cycle of any network deployment.

# IDENTITY

Since 1993  
Servicing the telecommunications industry exclusively  
Headquartered in Atlanta, Georgia  
10 domestic and international locations  
Employing over 500 technical professionals worldwide



**A to Z. End to End. Soup to Nuts.**

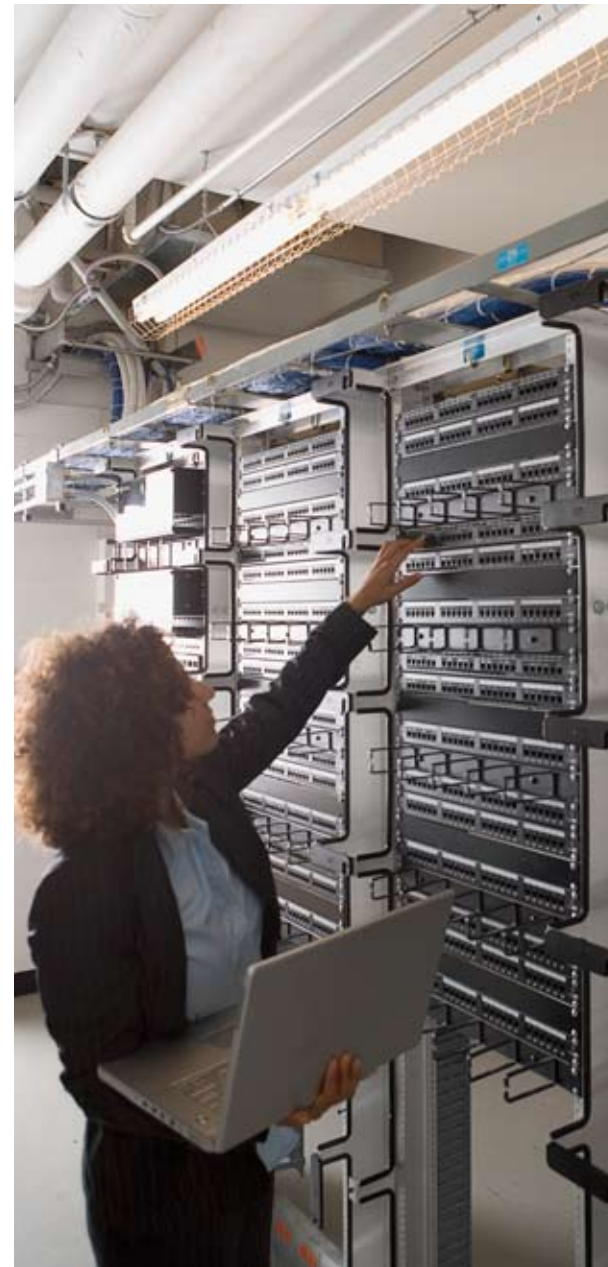
ADEX can extend the capability of any communications company anywhere in the world. We provide a complete range of services that encompass the major elements of a network buildout, and offer them in a variety of service delivery models.

Utilizing any or all of the services we provide allows your organization to: improve business focus, accelerate the benefits of organizational change, redirect internal resources to more strategic activities, and gain access to capabilities and skills not available internally.

ADEX works with each client to tailor a solution that successfully achieves it's business objectives.

We can handle projects on a complete turnkey basis, provide managed services for specific functional areas or assume departmental responsibilities through outsourcing.

If you are building or expanding a wireline, wireless, broadband or IP based network, consider ADEX.



# MISSION

**ADEX service capabilities extend from the most basic installation functions to the most advanced engineering disciplines for today and tomorrow's communications networks.**

Companies can increase the capability of their existing departments without adding personnel, facilities or equipment to their overhead.

# CAPABILITIES



# Network Integration

## Project Management

## Construction Management

## network support

## Equipment I&C

## Technical Consulting

# Engineering

facilities / site development

business & technology objectives definition / migration strategy development / network architecture / hardware, software, systems definition / RFP development, vendor selection / project planning

task, schedule management / subcontractor management / vendor, utility coordination / material management / status reporting, disaster recovery planning / regulatory requirements / OSP craft services: splicing, I&R, inspection

test plan development, execution / end to end network test / hardware, software test / system configuration / switch integration / test & validation / wireless network optimization

switching / transport / optical / ATM, frame relay / internet infrastructure / broadband access / wireless infrastructure / TDMA, CDMA, GSM / power / new, initials / wimax / extensions / overlays / upgrades / removals

facilities design & planning / A&E development / ROW acquisition, site acquisition / regulatory, permitting process management

development & management of project plans / subcontractor selection / project management team selection / project reporting systems / change order management

on site equipment maintenance / network monitoring, surveillance / network & systems administration / NOC staffing, management / mentoring, training / provisioning, addressing

network design, planning / RF engineering / equipment engineering / transmission engineering / OSP engineering / systems, test engineering / off premise engineering facilities

# CAPABILITIES

## TECHNICAL CONSULTING / PROJECT MANAGEMENT



Whether it's overseeing the deployment of additional cell sites on some remote Island or managing a team of engineers planning the next 4G network, ADEX Project Managers and technical consultants can provide you the level of expertise and professionalism needed for success. ADEX consultants can perform a variety of functions such as Business & Technology objectives definition, Migration strategy development, Network Architecture, Hardware/software/systems definition and RFP development/Vendor selection.

ADEX project managers can develop and manage project plans and schedules, handle subcontractor selection, project management team selection, and establish project reporting systems including change order management.

## ENGINEERING



ADEX engineers are experienced in the latest design concepts, product technologies, and engineering aids. Projects can be engineered to industry standards such as Telcordia GR1502-CORE or your own internal specifications.

ADEX's "off premise" engineering operations routinely support some of the country's largest Telecom companies. Our five locations are linked directly to client engineering departments and utilize client specific engineering systems that allow for real time generation of end product deliverables.

Engineering disciplines include: Network design/planning, RF Engineering, Field Engineering, Site Engineering, Hardware Engineering, Database Engineering, Transmission Engineering, OSP Engineering, Systems/ Test Engineering

## SITE DEVELOPMENT / CONSTRUCTION MANAGEMENT



ADEX personnel have participated in the site development and construction of wireline and wireless networks throughout the U.S. and in 54 countries worldwide. From initial planning to on-air, we've got you covered.

ADEX services encompass Facilities design & planning, A&E management, ROW acquisition, Site acquisition, Regulatory/Permitting process management, Contracts administration, Task/Schedule management, Subcontractor management, Vendor/Utility coordination, Material management, Status reporting/Disaster recovery planning, Regulatory requirements and OSP craft services including: Splicing, I&R, and Inspection

## EQUIPMENT I&C



Our equipment Installation and commissioning services are structured around your needs. Whether a single installer or a complete I&C team, ADEX provides solutions that will meet your schedule, honor your budget, and conform to quality standards, at competitive and flexible prices.

ADEX 's management team is comprised of industry veterans, experienced in the latest technologies, a wide range of OEM systems and comfortable with large scale deployments. This allows us to provide clients with single points of contact for scheduling, deployment, change control, documentation, pricing, customer satisfaction, and a successful completion and acceptance of the project.

## NETWORK INTEGRATION



ADEX provides network integration services to some of the top equipment manufacturers in the industry. They turn to ADEX for qualified technical professionals to augment their existing staff and meet their client's critical deadlines.

ADEX technicians routinely perform Test plan development/Execution, End to end network testing, Hardware/Software testing, Software upgrades, System configuration, Switch Integration, Test & Validation, Wireless Network Optimization

## NETWORK SUPPORT



ADEX keeps your network secure and operating at optimal levels. Our professionals bring this sense of priority to some of the nation's largest network support teams. Whether you need temporary Tier 1 administrative support or subject matter experts to work with your customers on site, ADEX has the level of expertise you require.

On site equipment maintenance, Network monitoring & surveillance, Network & systems administration, NOC staffing/Management, Mentoring/Training, Provisioning/Addressing, Assisted operate services

## DISASTER RECOVERY



Most telecommunications managers are already busy when an emergency arises. They need additional personnel, but more importantly, they need supervision for the additional crews. Our experience in managing disaster recovery efforts starts with this Key element: Supervision. Emergency services are most efficiently rendered when our Supervisor interfaces with the customer Supervisor. Our Supervisors are equipped with laptops, mapping software, printers, directional devices and wireless communications capability. Our technicians are equipped with all the tools and equipment needed to get your network up and running. ADEX can provide supervised fully-equipped crews of line construction personnel with T-40's, fiber and copper splicers, residential I&M people, and others. Our wireless personnel can deploy and turn up mobile cell sites, coordinate T1 delivery, perform antenna and line sweeps as well as RF drive testing while restoring or replacing existing infrastructure.

Our emergency contingent planning can be customized to include: mobile ADEX field offices, supervision, staffing commitments by classification, refueling of customer portable generators and other equipment, debris removal, tree trimming, lodging, meals, water, ice, toilets and showers, medical, and other contingencies. We provide the planning part of our services at no cost to our customers.

INDUSTRY KNOWLEDGE / MANAGEMENT DEPTH & EXPERIENCE  
/ WORLD CLASS RECRUITING CAPABILITY / RAPID RESPONSE /  
SEAMLESS SERVICE INTEGRATION / RELIABILITY / FLEXIBILITY

# WE DO IT BETTER.

**Formed in 1993 to provide services exclusively to the telecommunications industry, ADEX has seen it's reputation for providing a consistently high level of service grow with each new engagement.**

**Here's why:**

## **Industry Knowledge**

From the beginning, our sole focus has been the telecommunications industry. Our knowledge of trends, technologies, and techniques for network deployments is constantly updated and kept current. This ensures our clients that they are dealing with a firm that understands their business needs and objectives.

## **Management**

At the core of our success is our management team. We have assembled a group of "Industry Experts", representing a cross section of experience by discipline and industry segment. Many have held mid and high level management positions with the industry's largest wire line and wireless carriers, equipment manufacturers and tier 1 ISPs. This knowledge base enables us to quickly relate to your particular situation, offering seamless service solutions and a hands on commitment to your project.

## **Quality People / Quality Services**

The common denominator of any successful undertaking is the quality and performance levels of the personnel assigned to it. ADEX excels at sourcing and retaining the right people to do the right job. Since Telecommunications is "ALL WE DO", we are continually contacting telecom professionals, all day, every day. We are constantly updating our database of over 80,000 telecom professionals, performing technical screenings and background checks to best insure a proper and successful match. Our staff of bilingual recruiters are able to source technical personnel from around the world, for projects anywhere in the world.

## **Seamless Service**

In today's business environment, companies want to incorporate outsourced or managed services into their overall project plan without the need to allocate additional internal resources to manage them. They need a seamless integration of these functions. ADEX's management team works with you to successfully blend our deployment teams within your organization, providing the same level of response, status reporting, change management, documentation, and project completion that you would expect from your own internal work groups.



## **It all adds up to Reliability.**

Doing the right things over and over again. Understanding your needs, responding quickly but accurately. Following up, taking corrective action. Building confidence and trust and long term relationships. That's reliability. That's ADEX.

### **Contact us today.**

ADEX Corporation  
1035 Windward Ridge Parkway Suite 500  
Alpharetta, Georgia 30005 USA

Tel. 678.393.7900  
Fax. 770.751.0914

[www.adextelecom.com](http://www.adextelecom.com)

**ARGENTINA / ARUBA / BAHAMAS / BARBADOS / BERMUDA / BOLIVIA / BRAZIL / CANADA / CHILE / COLOMBIA / CZECH REPUBLIC / DOMINICAN REPUBLIC / EGYPT / FRANCE / GERMANY / GHANA / GUAM / GUATEMALA / GUYANA / HAITI / HONDURAS / HONG KONG / HUNGARY / INDONESIA / ISRAEL / ITALY / JAMAICA / JAPAN / KOREA / MEXICO / MYANMAR / NETHERLANDS / NIGERIA / PANAMA / PERU / PHILIPPINES / PORTUGAL / PUERTO RICO / RUSSIA / SAUDI ARABIA / ST. MARTIN / SURINAME / TAIWAN / THAILAND / TRINIDAD / UKRAINE / UNITED KINGDOM / UNITED STATES / UZBEKISTAN / VENEZUELA / VIETNAM / VIRGIN ISLANDS / YEMEN**